



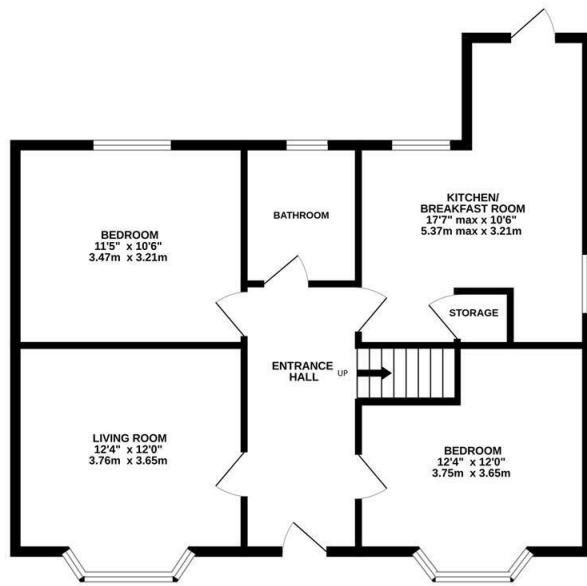
Westfield Lane, St. Leonards-On-Sea TN37 7NG

Offers in excess of £360,000

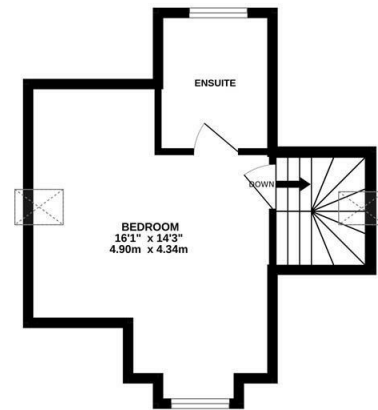


A charming three bedroom DETACHED CHALET BUNGALOW with a detached garage and OFF ROAD PARKING for multiple vehicles. It's enviably positioned on the outskirts of St. Leonards, on the cusp of Westfield Village and within easy reach of good schools, transport links and the conquest hospital. The accommodation is WELL PRESENTED THROUGHOUT and offers generous proportions, the ground floor is arranged as a bay fronted living room which enjoys a front aspect while the EAT-IN KITCHEN is positioned at the rear of the property benefiting from access to the LANDSCAPED GARDEN. There are two double bedrooms together with a family bathroom while the upper floor houses the principal bedroom which enjoys a dual aspect and EN-SUITE SHOWER ROOM. Externally the garden provides multiple seating areas including a large patio and an area of lawn. At the front of the property there is a DETACHED GARAGE and off road parking for multiple vehicles. Being sold with NO ONWARD CHAIN this fantastic property is not to be missed.

GROUND FLOOR
801 sq.ft. (74.4 sq.m.) approx.



1ST FLOOR
282 sq.ft. (26.2 sq.m.) approx.



TOTAL FLOOR AREA: 1083 sq.ft. (100.6 sq.m.) approx.

Whilst every attempt has been made to ensure the accuracy of the floorplan contained here, measurements of doors, windows, rooms and any other items are approximate and no responsibility is taken for any error, omission or mis-statement. This plan is for illustrative purposes only and should be used as such by any prospective purchaser. The services, systems and appliances shown have not been tested and no guarantee as to their operability or efficiency can be given.
Made with Metropix ©2026

